

Electrostatic charges in production processes often cause disruptions and reduce both the process speed and the product quality.

The EXPR50 Ion Blower Pistol can now be used for active discharging, also in the hazardous area. The pistol is most effective in zones where charged surfaces attract and bind dust particles and where surfaces need to be discharged as well as cleaned effectively at the same time before finishing. Paintshops benefit especially when parts are first blown off with ionised air and then finished free of dust.

The long discharging range supported by a powerful blast of air creates a special depth effect - discharging and blowing off static dust at the same time.

Features of the Ion Blower Pistol EXPR50:

- use in hazardous area
- ultimate safety through passive discharging when the power supplies are off
- high active discharging power through patented insulated ground conductors
- safety through function and pollution monitoring in connection with the ES53 power supply
- no electric shock risk when touching the tips
- flow-optimized air nozzle
- variable air supply

## Technical Information



F00042yy

### Ion Blower Pistol EXPR50

for AC operation

TI-en-2063-1009

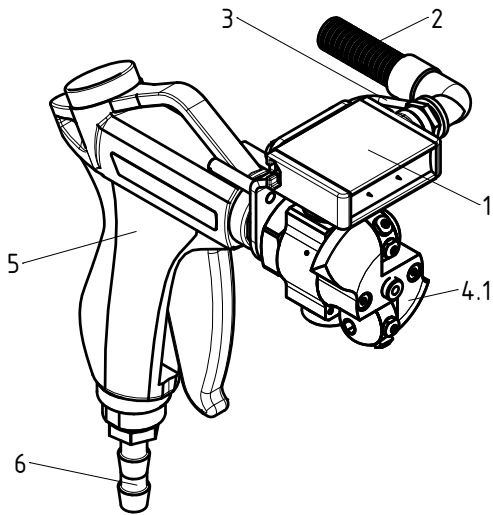


electrostatic  
innovations

## Variants EXPR50

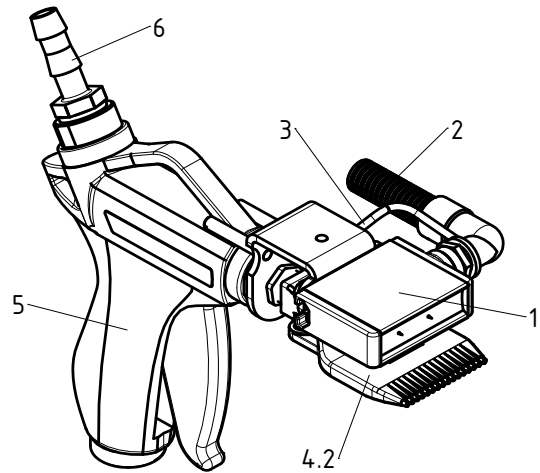
### bottom air connection

rotating nozzle without filter: EXPR50/NC

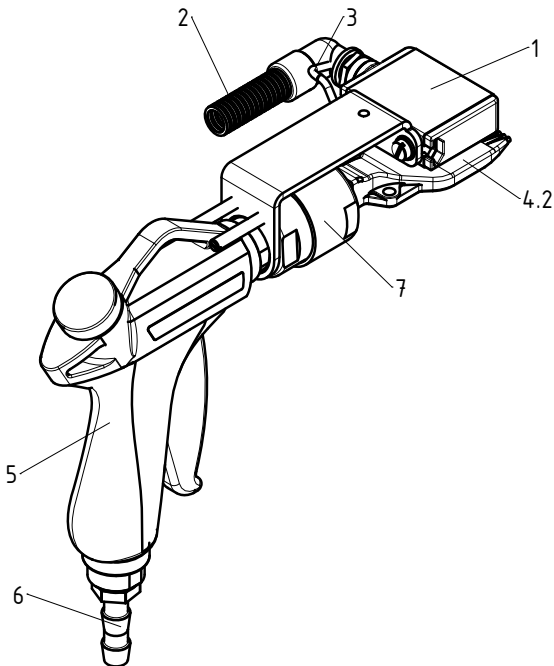


### top air connection

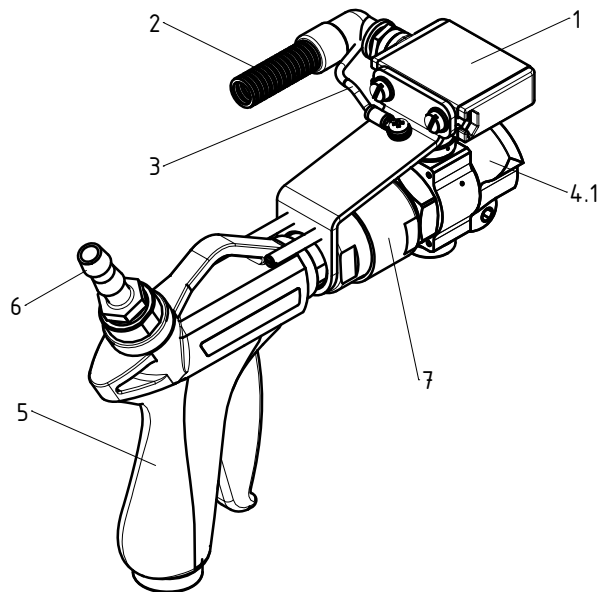
fishtail nozzle without filter: EXPR50/OF



fishtail nozzle with filter: EXPR50/FF



rotating nozzle with filter: EXPR50/GC

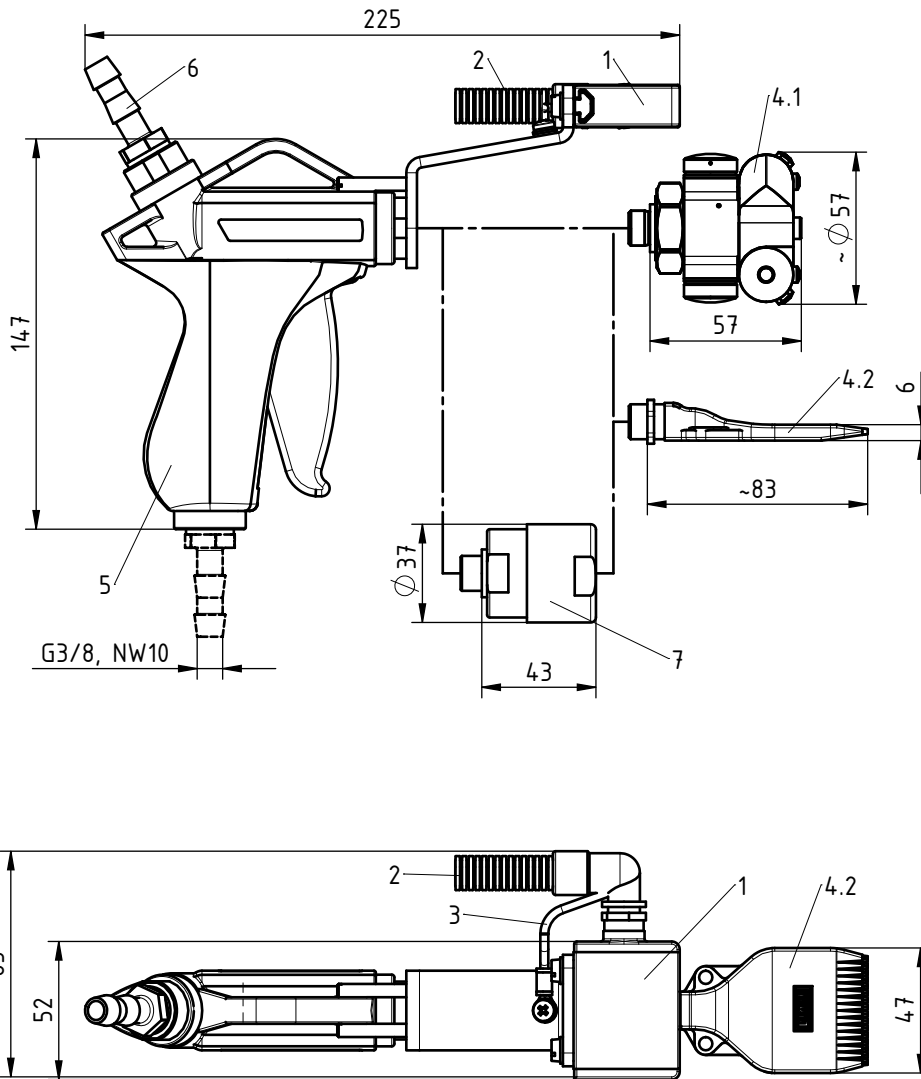


Depending on application, a grease filter should be provided which serves solely to eliminate grease particles from the piston movement of the blower pistol.



electrostatic  
innovations

## Dimensions Ion Blower Pistol and Ion Blower Nozzles



- 1 Ex-Discharging bar
- 2 High voltage cable
- 3 Ground cable (grounding)
- 4 Air nozzle, depending on application
- 4.1 Rotating nozzle
- 4.2 Fishtail nozzle
- 5 Metallic coated Ion Blower Pistol, depending on the version: air connection at the top or bottom
- 6 Air connection NW10
- 7 Air filter (at EXPR50/F and EXPR50/G)

The air supply is not included in the delivery; conductive compressed air hoses must be used.

Z-111753y

